

Newstead Wood School

Year 11 curriculum evening

Wednesday, 25th September 2024



Welcome. Year 11 journey

Mariu Hurriaga

Deputy Headteacher: Curriculum, Teaching and Learning

- ▶ Academic success through personal attention and individualised support
- ▶ Mock 1: November 18th
- ▶ Mock 2: March 17th
- ▶ Academic achievement and development as well-rounded individuals prepared to make a positive impact on the world
- ▶ Inclusion
- ▶ Leadership
- ▶ Dedicated, passionate and knowledgeable staff
- ▶ We are preparing your daughters to thrive in the VI Form and beyond



Making the most of Year 11

Stylianos Koukouvitakis

Head of Year 11



GCSE Exams June 2024

84% of the grades were 7-9

Grade distribution:

9 - 37%

8 - 28%

7 - 19%

9-7 - 84%

80 students (52%) received all 7-9 Grades

135 students (88%) received 8 GCSES 7+



University destinations 2024

Queen Mary University	17	Brighton and Sussex Medical School	3	Middlesex University	1
University of Warwick	14	Degree Apprenticeship	5	Newcastle University	1
Kings College London	10	Kingston University	3	Nottingham Trent University	1
University of Bath	9	London School of Economics	3	Portsmouth University	1
University College London	9	University of Sheffield	3	St George's	1
University of Birmingham	8	Aston University	2	University of Cardiff	1
Durham University	7	Cardiff University	2	University of Durham	1
Imperial College London	7	University of Brighton	2	University of Edinburgh	1
University of Nottingham	7	University of East Anglia	2	University of Kent	1
University of Oxford	7	University of Leeds	2	University of Leicester	1
University of Southampton	7	University of Sussex	2	University of Plymouth	1
University of Manchester	6	University of the Arts London	2	University of St Andrews	1
City University	5	Brunel University	1	University of Surrey	1
Loughborough University	5	Keele University	1	University of the Creative Arts	1
University of Bristol	5	Leeds Arts University	1	University of Westminster	1
University of Exeter	5	Manchester Metropolitan University	1	University of York	1
University of Cambridge	5	Royal Holloway University	1	Gap Year	29



University courses 2024

Medicine	21	Physics, Astrophysics and Combined Honours	6	Architecture, Architectural Engineering	2
Biology, Biomedical/BioMed Engineering, Biochemistry, Neuroscience	18	Chemistry, Chemical Engineering	5	English Literature, English Language, Combined Honours	2
Economics and Combined Honours	16	Fashion Design, Fashion Buying	5	History, Ancient History	2
Philosophy, Politics, PPE/PP/PPL/RPE	15	Pharmacy, Pharmacology	5	International Relations, European Studies	2
Engineering - Mechanical, Electronic, Civil	11	Art, Art History	4	Natural Sciences	2
Mathematics	11	Classics	4	Archaeology, Anthropology	2
Accounting and Finance	10	Business and Management	3	Criminology	1
Psychology and Psychology Combined Honours	10	Health, Nursing, Speech and Language Therapy	3	Dentistry	1
Computing Science and Combined Honours	8	Sociology, Social Sciences	3	Digital Technology	1
Geography, Earth Science, Geoscience, Environmental Science	7	Aeronautics and Astronautics	2	Languages	1
Law	6				



OD SCHOOL

"Creating opportunities for success"

The power of organisation - Using a Revision Timetable

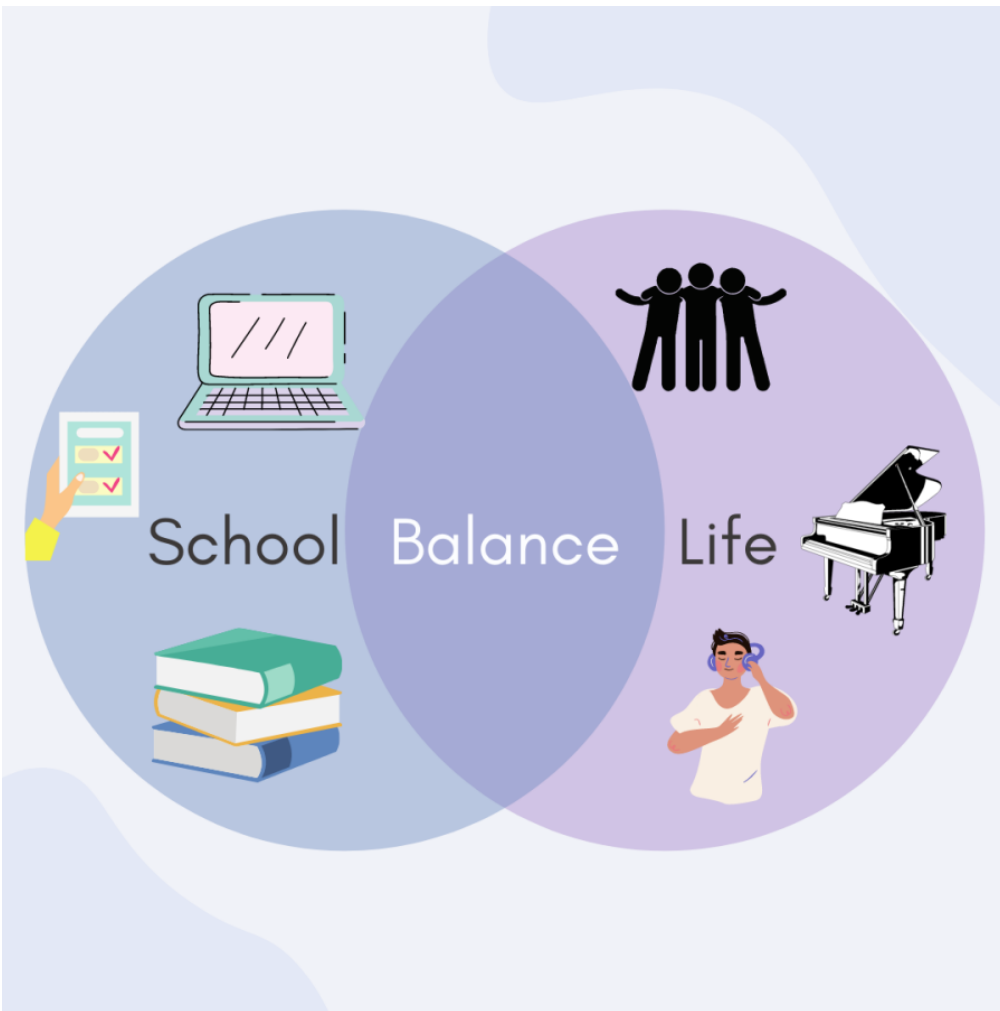
WEEKLY REVISION TIMETABLE

Week beginning: ____ / ____ / 2024

	MONDAY	TUESDAY	WEDNESDAY	THURSDAY	FRIDAY	SATURDAY	SUNDAY
TIMINGS	SCHOOL	SCHOOL	SCHOOL	SCHOOL	SCHOOL		
	SCHOOL	SCHOOL	SCHOOL	SCHOOL	SCHOOL	9.30-10.15AM Revision Biology	9.30-10.15am HW
	SCHOOL	SCHOOL	SCHOOL	SCHOOL	SCHOOL	BREAK	BREAK
	SCHOOL	SCHOOL	SCHOOL	SCHOOL	SCHOOL	10.15-11.00am REVISION BIOLOGY	10.15-11.00am: HW
SCHOOL SUPPORT 13.30-14.00	RPE or BIO - swap every other week	library study	ART walk-in	PHYSICS	CHEMISTRY	12.30-2.30PM: Tuition: Maths, English	BREAK
	SCHOOL	SCHOOL	SCHOOL	SCHOOL	SCHOOL	3.30 BACK HOME	12.30-2.30AM: Revision CHEMISTRY
BACK HOME 4.40PM	BACK HOME	BACK HOME	BACK HOME	BACK HOME	BACK HOME	3.40-4.00PM: Lunch	3.00-3.30: Lunch
5.00-5.45PM	HW or REVISION 1: English	HW or REVISION 1: Maths	HW or REVISION 1: Physics	HW or REVISION 1: Chemistry	HW or REVISION 1: DT	4.00-6.00PM: Revision RPE	BUFFER TIME IF NEEDED
BREAK 5.45- 6.00	BREAK	BREAK	BREAK	BREAK	BREAK	FREE	FREE
6.00-7.00PM	REVISION 2/Coursework: Art	REVISION 2	REVISION 2	REVISION 2	REVISION 2	FREE	FREE
DINNER 7.00- 7.30PM	DINNER 7.00- 7.30PM	DINNER 7.00- 7.30PM	DINNER 7.00- 7.30PM	DINNER 7.00- 7.30PM	DINNER 7.00- 7.30PM	FREE	FREE
7.30-8.30pm	REVISION 3	REVISION 3	REVISION 3	REVISION 3	REVISION 3	FREE	FREE
Extra time if you need it 9.00- 10.30 otherwise FREE 8.00- 10.30pm	buffer time or FREE	buffer time or FREE	buffer time or FREE	buffer time or FREE	buffer time or FREE	FREE	FREE



The importance of living a balanced school life



Healthy routines

- ▶ Balanced diet
- ▶ Exercise
- ▶ Good sleeping patterns
- ▶ Time management and organisation:
resources, study and revisions
timetables and to-do lists

Serious, but not stressed!

The Iceberg Illusion

Success is an iceberg

SUCCESS!

WHAT PEOPLE SEE

WHAT PEOPLE DON'T SEE

Persistence



Failure



Sacrifice



Disappointment



Dedication



Hard work



Good habits



@sylviaaduckworth

Points of contact and support

- Teachers
- Form tutors
- Mentors
- SENCO: Ms Ricketts
- DSL: Ms Norris
- Support Manager: Ms Arscott
- External professionals
- Head of Year: Mr Koukouvitakis
- Assistant Head Progress Lead for KS4: Mr Daley
- Sixth form team

Academic Support

Tim Daley

Assistant Headteacher: Progress and Standards KS4

- **Subject teacher – first line support:**

- Identify areas of strength & challenge
- Clear and precise feedback
- Close monitoring of progress + frequent checks of learning
- Subject interventions & mentoring

- **Head of Year support – second line support:**

- Support plans
- Coordinate referrals i.e. well-being, SEND (wider pastoral team)
- Respond to escalated academic concerns
- Monitor in-lesson progress & interventions

- **Key stage lead support – third line support:**

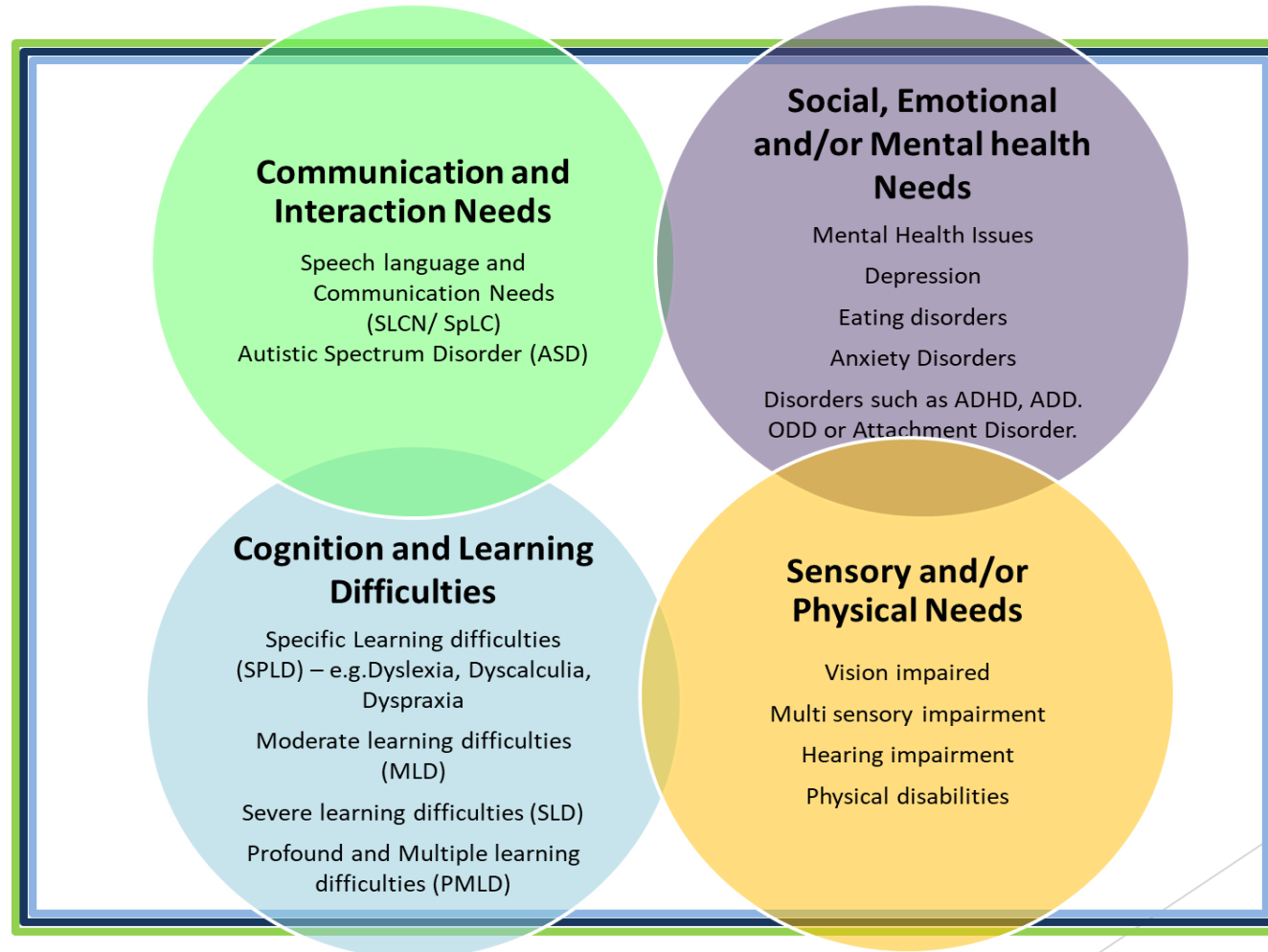
- Regular analysis of progress data for all students
- Review impact of support
- Coordinate interventions
- SLT 1:1 mentoring
- Monitor in-lesson progress



Support for our SEND students

Jodi-Ann Ricketts

SENCO



Cognition and Learning Difficulties

Specific Learning difficulties (SPLD) – e.g. Dyslexia, Dyscalculia, Dyspraxia

Moderate learning difficulties (MLD)

Severe learning difficulties (SLD)

Profound and Multiple learning difficulties (PMLD)

Communication and Interaction Needs

Speech language and Communication Needs (SLCN /SpLC)
Autistic Spectrum Disorder (ASD)

Potential Classroom Issues

Understanding abstract concepts

Retaining information from one lesson / topic to the next

Working independently

Learning using and retaining new vocabulary

Processing new information

Holding information in working memory

Accessing the literacy demands of the curriculum

Learning and using spelling rules

Reading with accuracy and fluency, at speed

Planning and organising work

Processing speed difficulties

Copying from the board

Completing a task independently, even after it has been modelled.

Potential Classroom Issues

Understanding long sections of speech

Correct expression in speech and writing

Copying text from the board

Understanding more complex grammar forms

Comprehending texts with tier 2 and 3 vocab in

Support in school

- ▶ Students are supported in lessons through high quality teaching that is adapted to meet their needs.
- ▶ Some students are identified for catch-up sessions to help bridge gaps in their learning.
- ▶ Some students will get an academic mentor to help them navigate this very important year.
- ▶ The pastoral team offers emotional and wellbeing support.
- ▶ Students on the SEND register will have the opportunity to meet with me one-to-one, to discuss bespoke support arrangements.
- ▶ Prior to the start of the mock exams, the exam officer and I will meet with all SEND students with access arrangements to ensure they know what their arrangements are and answer any queries they may have.



Access Arrangements

- ▶ Access arrangements allow students with specific needs, such as special educational needs and disabilities to access an exam.
- ▶ They allow students to show what they know and can do without changing the demands of the exam.
- ▶ Various access arrangements are available to students and should be their normal way of working. For example, support for students who have difficulties with reading, writing, speed of working and concentration.
- ▶ Not all students with additional needs will require access arrangements. It depends on whether their difficulty affects their access to exams. Additional needs alone do not entitle a student to access arrangements.

Preparing for exams



- ▶ In a few weeks, your daughters will be sitting their mock GCSE exams. This will be done in exam-style conditions and anyone with access arrangements, will know what is in place prior to this.
- ▶ Parents can support their children by helping them create a manageable routine and revision timetable.
- ▶ Some level of stress or anxiety can be expected, but it is important that we watch out for the warning signs that they might be struggling with the pressure.

Questions?

If you have any queries, please do get in touch with me at jricketts@newsteadwood.co.uk

Thank you.



Pastoral support during this important year

Amy Norris

Director of Safeguarding and Wellbeing (DSL)

- At Newstead, we are proud play a role in equipping your children with resilience and coping strategies which they will carry with them into adulthood.
- We celebrate everyone's mental wellbeing with the sight that they will be able to enjoy being part of the Newstead community and in turn achieve their full potential.
- Whether it be following a serious incident, or it being an emotionally heightened time, our students can access support at school.





Miss Norris

Designated Safeguarding and Wellbeing Lead



Mrs Dalton

Deputy Headteacher & Deputy Designated Safeguarding Lead



Mr Bournat

Assistant Headteacher & Deputy Designated Safeguarding Lead



Ms Ricketts

SENCO



Mrs Arscott

Student Support Mentor



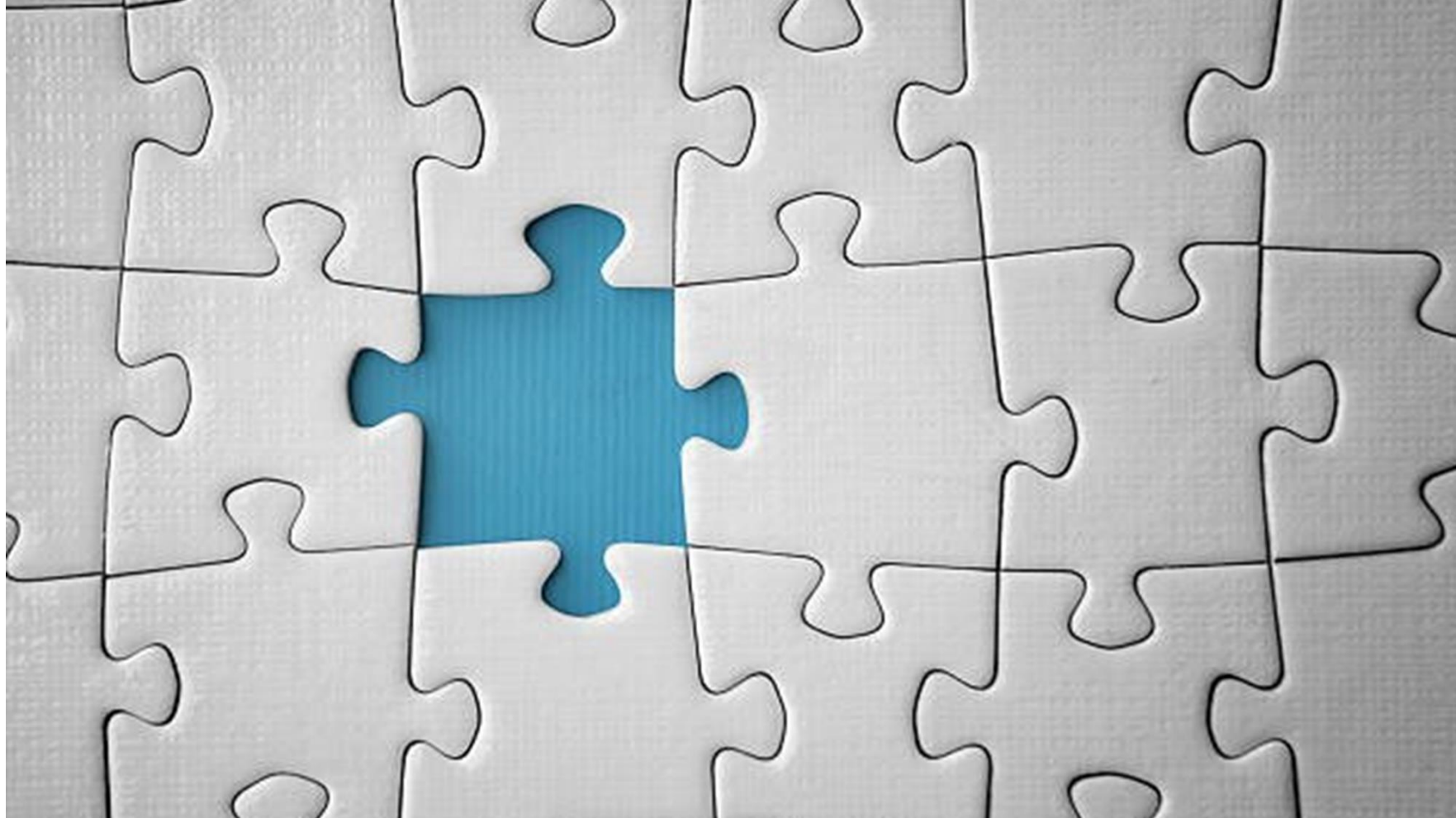
Mr Koukouvitakis

Head of Year 11

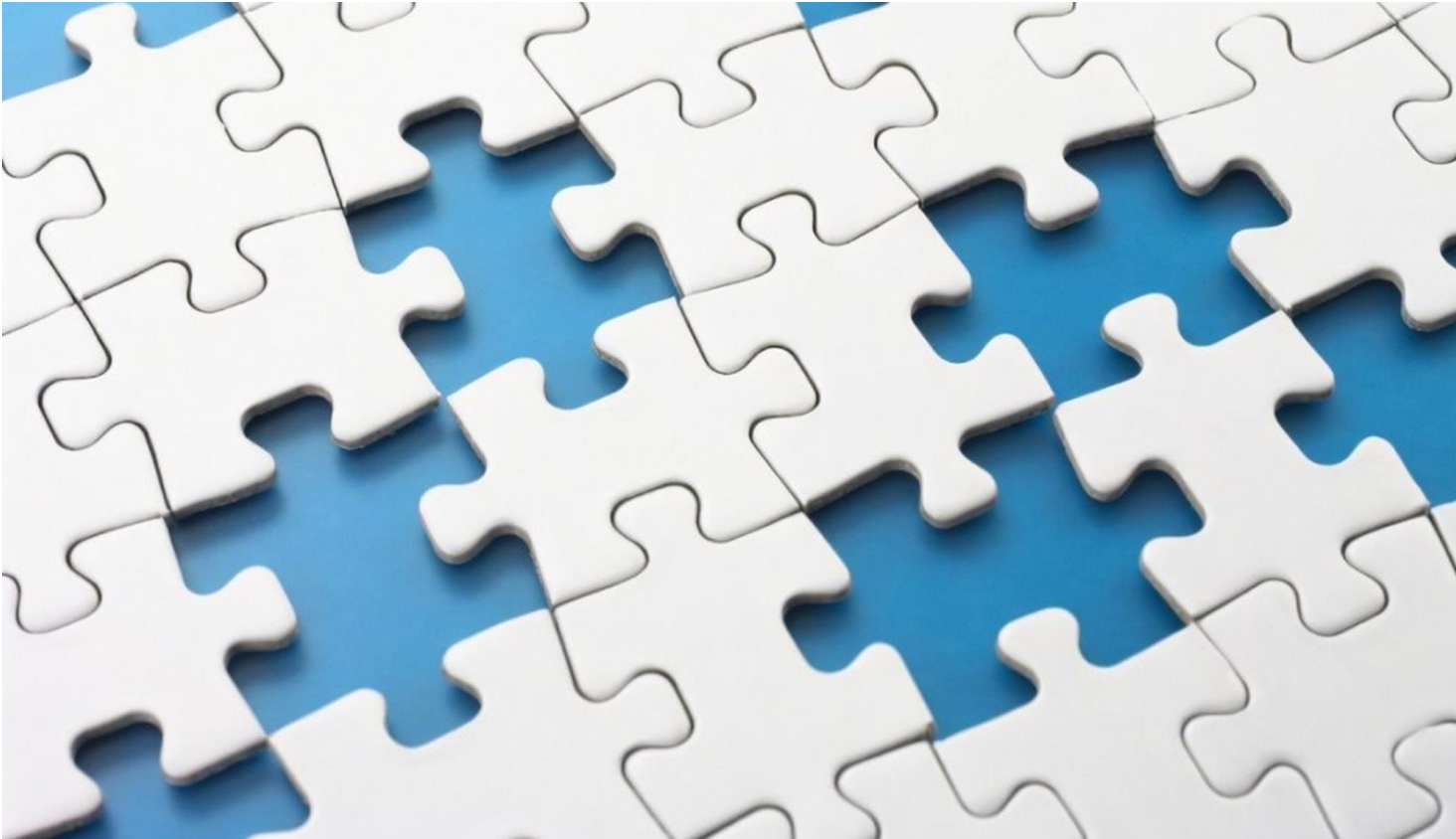
Ben Williams

Assistant Headteacher: Progress and Standards KS5





Thinking ahead- requirements for Sixth Form



Thinking ahead- Sixth Form - why us?



- ▶ 85% A* - B
- ▶ 38% students With A* / A
- ▶ 75% of students went to a Russel Group University

Thinking ahead- Sixth Form - why us?

We offer so much more than just amazing results:

- ▶ Elective Programme
- ▶ Weekly Lecture Programme
- ▶ Clubs and Societies
- ▶ EPQ
- ▶ Performing Arts
- ▶ Sport
- ▶ Leadership opportunities
- ▶ Oxbridge/MDV support



Thinking ahead- Sixth Form - why us?

We offer so much more than just amazing results:

- ▶ UCAS support – personalised and in depth
- ▶ UCAS launch day with university speakers
- ▶ Access to Unifrog support
- ▶ Fully-funded UpLearn access (£650 per student per subject)
- ▶ Amazing events throughout the year (APOS, ACE, Newstead day, School Musical and lot's more)
- ▶ Specific Sixth form only spaces and study time

The UCAS logo consists of the letters 'UCAS' in a bold, sans-serif font. The 'A' is stylized with a red triangle pointing upwards, and the 'S' has a red triangle pointing downwards.The UpLearn logo features the word 'Up' in a green, rounded font with a small graduation cap above the 'p'. Below it, the word 'LEARN' is written in a bold, green, sans-serif font.The Unifrog logo consists of the word 'unifrog' in a white, lowercase, sans-serif font, centered within a teal square.

Thinking ahead- Sixth Form

Next Steps:

- ▶ 17th October Newstead Students 6th Form opening Evening
- ▶ Chance to find out about all the Sixth form offers
- ▶ Once this is done our application process via Applica will open and students can select their options
- ▶ We build our timetable around these options, so Newstead Students get priority

Thank you!

Please ask staff for any individual questions.

